

# Reception desk collections

Specification Guide & Finishes - May 2023



Clarke Rendall



## STAVE

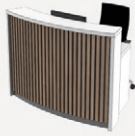
### TC Compact

W: 1600  
D: 873  
H: 1150



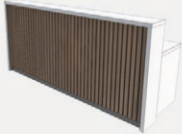
### TB Compact

W: 1575  
D: 877  
H: 1150



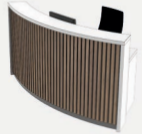
### TC1

W: 2400  
D: 873  
H: 1150



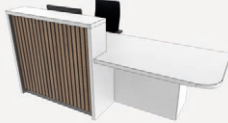
### TB1

W: 2320  
D: 877  
H: 1150



### TC1-L

W: 2400  
D: 873  
H: 1150



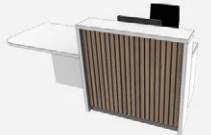
### TB1-L

W: 2320  
D: 877  
H: 1150



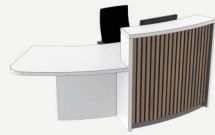
### TC1-R

W: 2400  
D: 873  
H: 1150



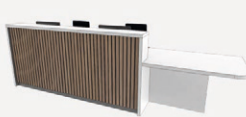
### TB1-R

W: 2320  
D: 877  
H: 1150



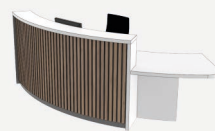
### TC2-L

W: 3600  
D: 873  
H: 1150



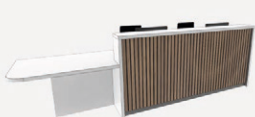
### TB2-L

W: 3320  
D: 877  
H: 1150



### TC2-R

W: 3600  
D: 873  
H: 1150



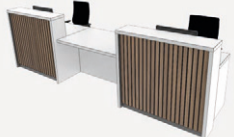
### TB2-R

W: 3320  
D: 877  
H: 1150



### TC2

W: 3600  
D: 873  
H: 1150



### TB2

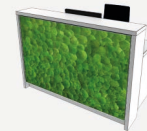
W: 3320  
D: 877  
H: 1150



## MOSS

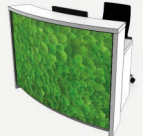
### MC Compact

W: 1600  
D: 893  
H: 1150



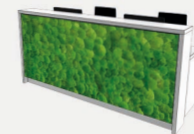
### MB Compact

W: 1575  
D: 871  
H: 1150



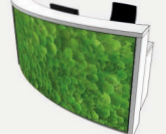
### MC1

W: 2400  
D: 893  
H: 1150



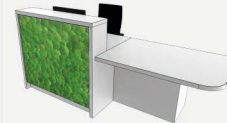
### MB1

W: 2320  
D: 871  
H: 1150



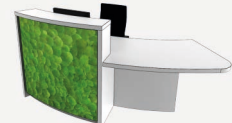
### MC1-L

W: 2400  
D: 893  
H: 1150



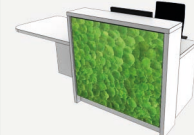
### MB1-L

W: 2320  
D: 871  
H: 1150



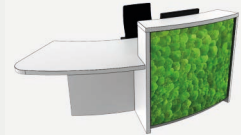
### MC1-R

W: 2400  
D: 893  
H: 1150



### MB1-R

W: 2320  
D: 871  
H: 1150



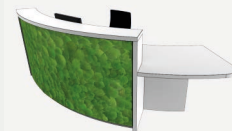
### MC2-L

W: 3600  
D: 893  
H: 1150



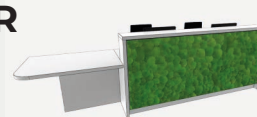
### MB2-L

W: 3320  
D: 871  
H: 1150



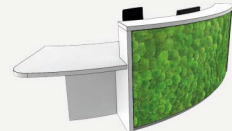
### MC2-R

W: 3600  
D: 893  
H: 1150



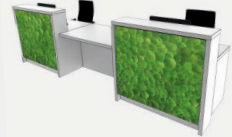
### MB2-R

W: 3320  
D: 871  
H: 1150



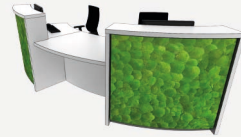
### MC2

W: 3600  
D: 893  
H: 1150



### MB2

W: 3320  
D: 871  
H: 1150



## XPRESSION

### XC Compact

W: 1600  
D: 820  
H: 1150



### XB Compact

W: 1575  
D: 823  
H: 1150



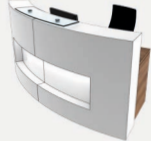
### XC1

W: 2400  
D: 820  
H: 1150



### XB1

W: 2320  
D: 823  
H: 1150



### XC1-L

W: 2400  
D: 820  
H: 1150



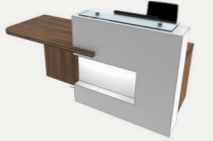
### XB1-L

W: 2320  
D: 823  
H: 1150



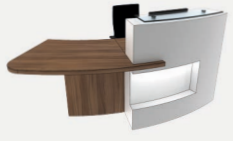
### XC1-R

W: 2400  
D: 820  
H: 1150



### XB1-R

W: 2320  
D: 823  
H: 1150



### XC2-L

W: 3600  
D: 820  
H: 1150



### XB2-L

W: 3320  
D: 823  
H: 1150



### XC2-R

W: 3600  
D: 820  
H: 1150



### XB2-R

W: 3320  
D: 823  
H: 1150



### XC2

W: 3600  
D: 820  
H: 1150



### XB2

W: 3320  
D: 823  
H: 1150



## CLASSIC

### SC Compact

W: 1600  
D: 820  
H: 1150



### SB Compact

W: 1575  
D: 823  
H: 1150



### SC1

W: 2400  
D: 820  
H: 1150



### SB1

W: 2320  
D: 823  
H: 1150



### SC1-L

W: 2400  
D: 820  
H: 1150



### SB1-L

W: 2320  
D: 823  
H: 1150



### SC1-R

W: 2400  
D: 820  
H: 1150



### SB1-R

W: 2320  
D: 823  
H: 1150



### SC2-L

W: 3600  
D: 820  
H: 1150



### SB2-L

W: 3320  
D: 823  
H: 1150



### SC2-R

W: 3600  
D: 820  
H: 1150



### SB2-R

W: 3320  
D: 823  
H: 1150



### SC2

W: 3600  
D: 820  
H: 1150



### SB2

W: 3320  
D: 823  
H: 1150



# ECLYPSE

## YC Compact

W: 1600  
D: 820  
H: 1150



## YB Compact

W: 1575  
D: 823  
H: 1150



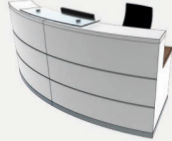
## YC1

W: 2400  
D: 820  
H: 1150



## YB1

W: 2320  
D: 823  
H: 1150



## YC1-L

W: 2400  
D: 820  
H: 1150



## YB1-L

W: 2320  
D: 823  
H: 1150



## YC1-R

W: 2400  
D: 820  
H: 1150



## YB1-R

W: 2320  
D: 823  
H: 1150



## YC2-L

W: 3600  
D: 820  
H: 1150



## YB2-L

W: 3320  
D: 823  
H: 1150



## YC2-R

W: 3600  
D: 820  
H: 1150



## YB2-R

W: 3320  
D: 823  
H: 1150



## YC2

W: 3600  
D: 820  
H: 1150



## YB2

W: 3320  
D: 823  
H: 1150



# LIGHT

## LC Compact

W: 1600  
D: 820  
H: 1150



## LB Compact

W: 1575  
D: 823  
H: 1150



## LC1

W: 2400  
D: 820  
H: 1150



## LB1

W: 2320  
D: 823  
H: 1150



## LC1-L

W: 2400  
D: 820  
H: 1150



## LB1-L

W: 2320  
D: 823  
H: 1150



## LC1-R

W: 2400  
D: 820  
H: 1150



## LB1-R

W: 2320  
D: 823  
H: 1150



## LC2-L

W: 3600  
D: 820  
H: 1150



## LB2-L

W: 3320  
D: 823  
H: 1150



## LC2-R

W: 3600  
D: 820  
H: 1150



## LB2-R

W: 3320  
D: 823  
H: 1150



## LC2

W: 3600  
D: 820  
H: 1150



## LB2

W: 3320  
D: 823  
H: 1150



## ZED

### ZC Compact

W: 1600  
D: 820  
H: 1150



### ZB Compact

W: 1575  
D: 823  
H: 1150



### ZC1

W: 2400  
D: 820  
H: 1150



### ZB1

W: 2320  
D: 823  
H: 1150



### ZC1-L

W: 2400  
D: 820  
H: 1150



### ZB1-L

W: 2320  
D: 823  
H: 1150



### ZC1-R

W: 2400  
D: 820  
H: 1150



### ZB1-R

W: 2320  
D: 823  
H: 1150



### ZC2-L

W: 3600  
D: 820  
H: 1150



### ZB2-L

W: 3320  
D: 823  
H: 1150



### ZC2-R

W: 3600  
D: 820  
H: 1150



### ZB2-R

W: 3320  
D: 823  
H: 1150



### ZC2

W: 3600  
D: 820  
H: 1150



### ZB2

W: 3320  
D: 823  
H: 1150



## EVOKE

### KC Compact

W: 1600  
D: 820  
H: 1150



### KB Compact

W: 1575  
D: 823  
H: 1150



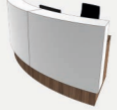
### KC1

W: 2400  
D: 820  
H: 1150



### KB1

W: 2320  
D: 823  
H: 1150



### KC1-L

W: 2400  
D: 820  
H: 1150



### KB1-L

W: 2320  
D: 823  
H: 1150



### KC1-R

W: 2400  
D: 820  
H: 1150



### KB1-R

W: 2320  
D: 823  
H: 1150



### KC2-L

W: 3600  
D: 820  
H: 1150



### KB2-L

W: 3320  
D: 823  
H: 1150



### KC2-R

W: 3600  
D: 820  
H: 1150



### KB2-R

W: 3320  
D: 823  
H: 1150



### KC2

W: 3600  
D: 820  
H: 1150



### KB2

W: 3320  
D: 823  
H: 1150



## SHARE

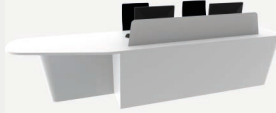
### H Compact

W: 1400  
D: 950  
H: 1050



### H2-R

W: 3420  
D: 950  
H: 1050



### H1

W: 2440  
D: 950  
H: 1050



### H2-LS

W: 3170  
D: 2150  
H: 1050



### H1-L

W: 2420  
D: 950  
H: 1050



### H2-RS

W: 3170  
D: 2150  
H: 1050



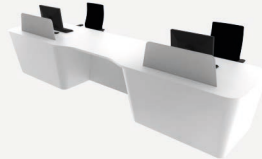
### H1-R

W: 2420  
D: 950  
H: 1050



### H2

W: 3940  
D: 950  
H: 1050



### H2-L

W: 3420  
D: 950  
H: 1050



## INVITE

### N Compact

W: 1540  
D: 1050  
H: 1050



### N2-R

W: 3395  
D: 1050  
H: 1050



### N1

W: 2540  
D: 1050  
H: 1050



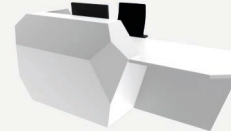
### N2-LS

W: 3320  
D: 2170  
H: 1050



### N1-L

W: 2390  
D: 1050  
H: 1050



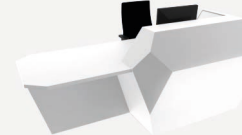
### N2-RS

W: 3320  
D: 2170  
H: 1050



### N1-R

W: 2390  
D: 1050  
H: 1050



### N2

W: 4040  
D: 2170  
H: 1050



### N2-L

W: 3395  
D: 1050  
H: 1050





## FINISHES

### Egger Plain Colour Laminates for XPRESSION, STAVE, ECLYPSE, LIGHT, ZED, MOSS, CLASSIC & EVOKE

<b>W1001</b> Solid Premium White	<b>U608</b> Pistachio Green	<b>U708</b> Light Grey	<b>U732</b> Dust Grey	<b>U780</b> Monument Grey	<b>U961</b> Graphite Grey
<b>F204</b> White Carrara Marble	<b>F186</b> Light Grey Chicago Concrete	<b>F187</b> Dark Grey Chicago Concrete	<b>F205</b> Anthracite Pietra Grigia	<b>F302</b> Ferro Bronze	<b>U999</b> Black

### Egger Woodgrain Laminates for XPRESSION, STAVE, ECLYPSE, LIGHT, ZED, MOSS, CLASSIC & EVOKE

<b>H1298</b> Sand Lyon Ash	<b>H1334</b> Light Sorano Oak	<b>H3395</b> Natural Corbridge Oak	<b>H3090</b> Shorewood	<b>H3734</b> Natural Dijon Walnut	<b>H3058</b> Mali Wenge
<b>H1150</b> Grey Arizona Oak	<b>H1146</b> Grey Bardolino Oak	<b>H3332</b> Grey Nebraska Oak	<b>H1486</b> Pasadena Pine	<b>H1330</b> Vintage Santa Fe Oak	<b>H3710</b> Natural Carini Walnut



### Solid Surface for EVOKE, SHARE & INVITE

Share and Invite desks are available in a choice of solid surface finishes, including Durasein®, Corian®, Hi-MACS®, Hanex®, Avonite Surfaces® and Krion® - please call the sales team for details of colour options and costs. For a truly value engineered solution, Invite is also available in solid premium white laminate. The feature section on EVOKE desks can be finished in either Laminate or solid surface.

The internal desk faces of all reception desks are finished in Egger W980 Platinum White laminate. Zed, Classic and Eclipse have a flush plinth in Aluminium laminate.

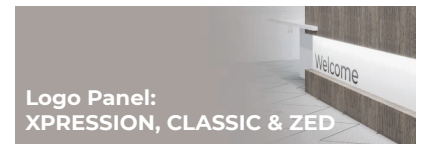
**For more information and to discuss any specific bespoke finish requirements that are not covered as part of our standard package, such as real wood veneers, please call our sales team on 01908 391 600.**

## OPTIONAL EXTRAS

**Adjustable height desktop:**  
Push button, silent, motor driven  
**ALL DESK RANGES**



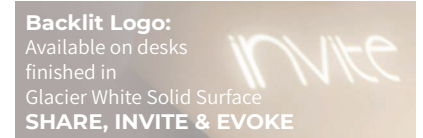
**Logo Panel:**  
XPRESSION, CLASSIC & ZED



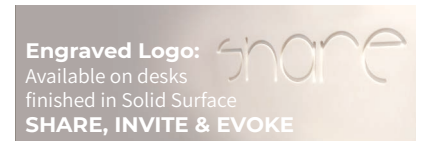
**Feature LED Lighting:**  
EVOKE



**Backlit Logo:**  
Available on desks  
finished in  
Glacier White Solid Surface  
**SHARE, INVITE & EVOKE**



**Engraved Logo:**  
Available on desks  
finished in Solid Surface  
**SHARE, INVITE & EVOKE**



**Pedestal:**  
White powder coated  
three drawer, slimline, mobile  
300m w x 570mm d x 600mm h



## WHAT TO DO NEXT...

You have browsed the Price List and chosen your desk. Before you place your order, based on frequently asked questions, please review the points listed below:

---

### Does it meet your client's requirements:

- Straight or Curved?
- Does it fit the space?
- How many Receptionists are there?

### Now you have your choice of desk:

- Choose your finishes
- Where applicable, do you require a logo?
- Do you require a pedestal?

### Couple of extra notes:

- All desks come with Cable Ports and Under Desk Wire Management as standard
- Where applicable all Plinths are Flush
- Artwork for Logo's is required in an eps vector format
- Call us for feature lighting costs (lighting is included as standard on Xpression & Light Desks)
- We are happy to modify the dimensions of any of these desks, call us to discuss

### Still have a query?

Call our Sales Support Team on 01908 391600 who will be happy to help.

### No more questions?

Place your order. Send your PO to [hello@clarkerendall.com](mailto:hello@clarkerendall.com) and we will do the rest.



### Head Office and Showroom:

Unit 12, Denbigh Hall Industrial Estate,  
Denbigh Hall Drive,  
Bletchley, Milton Keynes MK3 7QT  
Tel: 01908 391600

[hello@clarkerendall.com](mailto:hello@clarkerendall.com)

[clarkerendall.com](http://clarkerendall.com)

